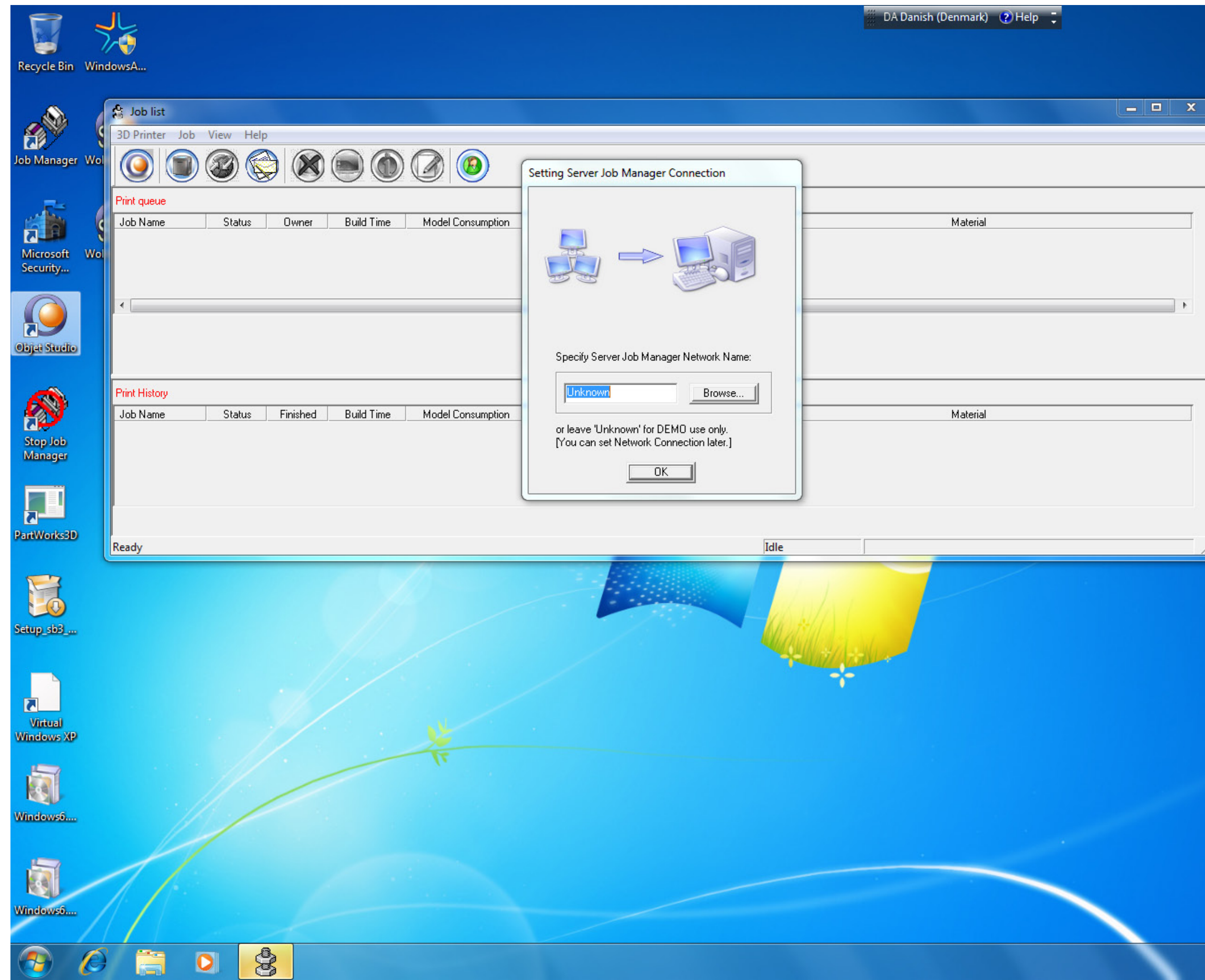


3Dprint guide

Follow this guide step by step to calculate the cost of printing your 3D model.

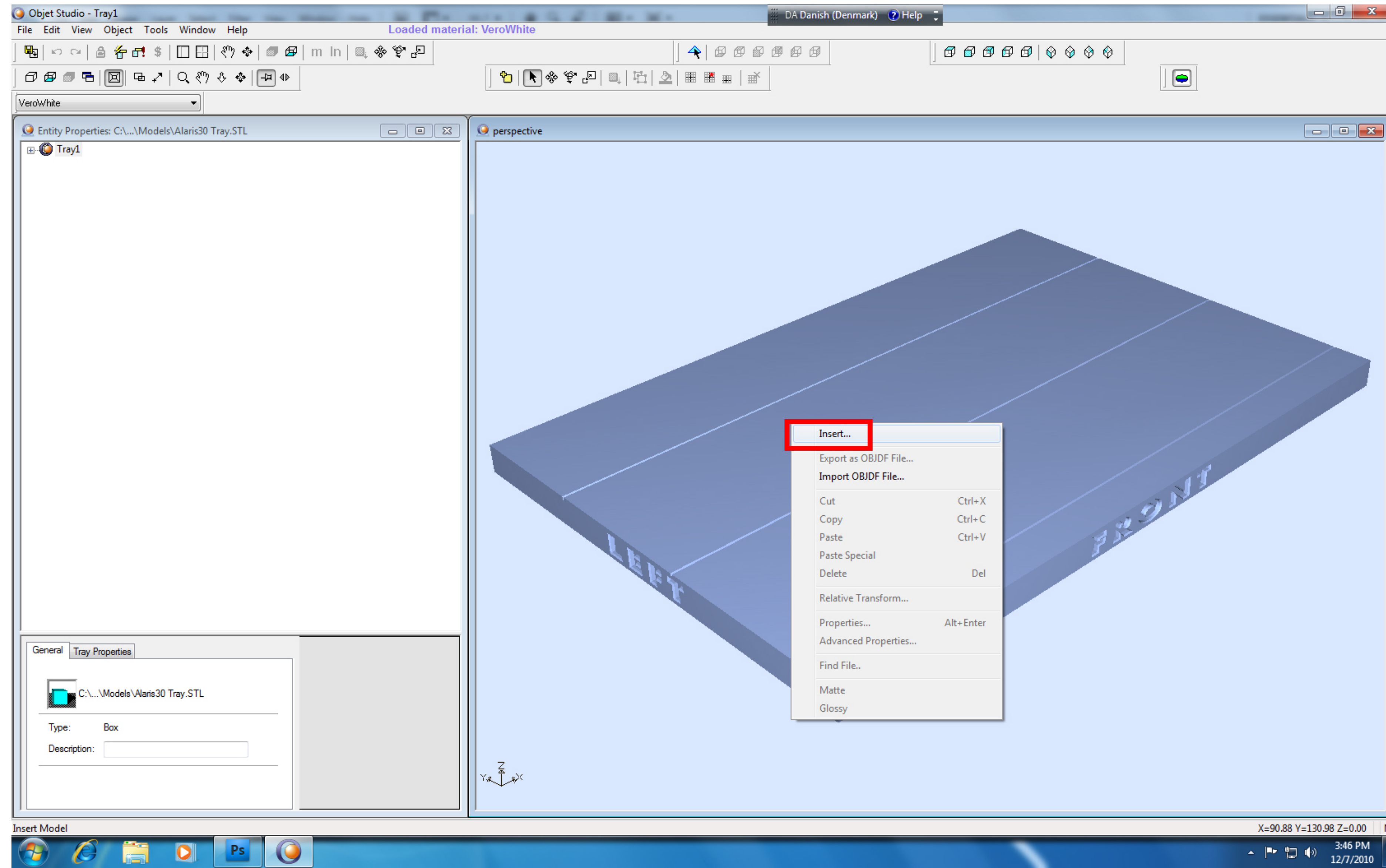
STEP #1

Open the software Ob-
jet Studio. If the Setting
Server Job Manager
Connection dialog ap-
pears, just press OK.
(the dialog box ap-
pears because you
cant connect 3Dprint-
er, and you dont need
to at the moment.)



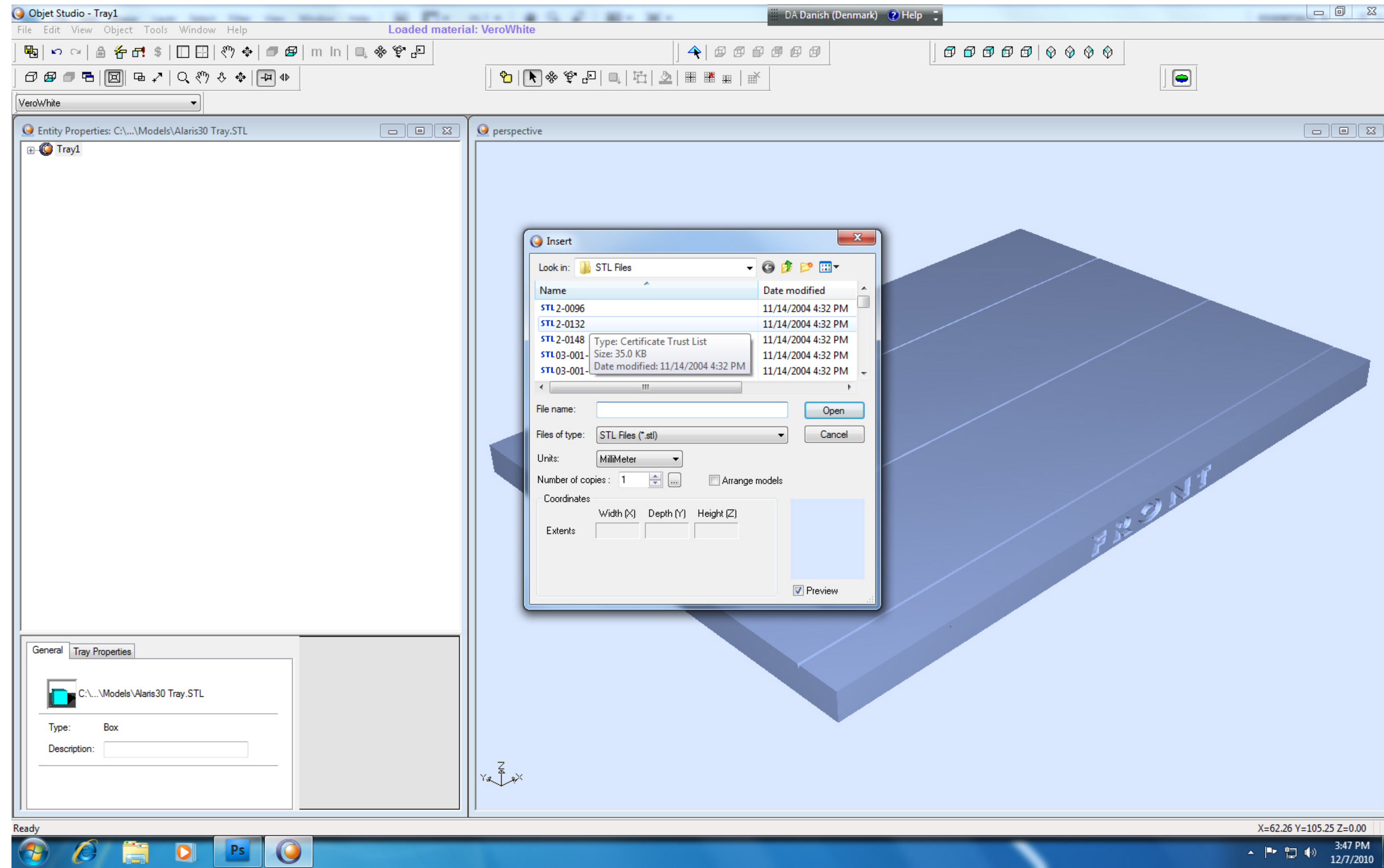
STEP #2

In the perspective view-
port right-click on the
tray and select
“Insert”.



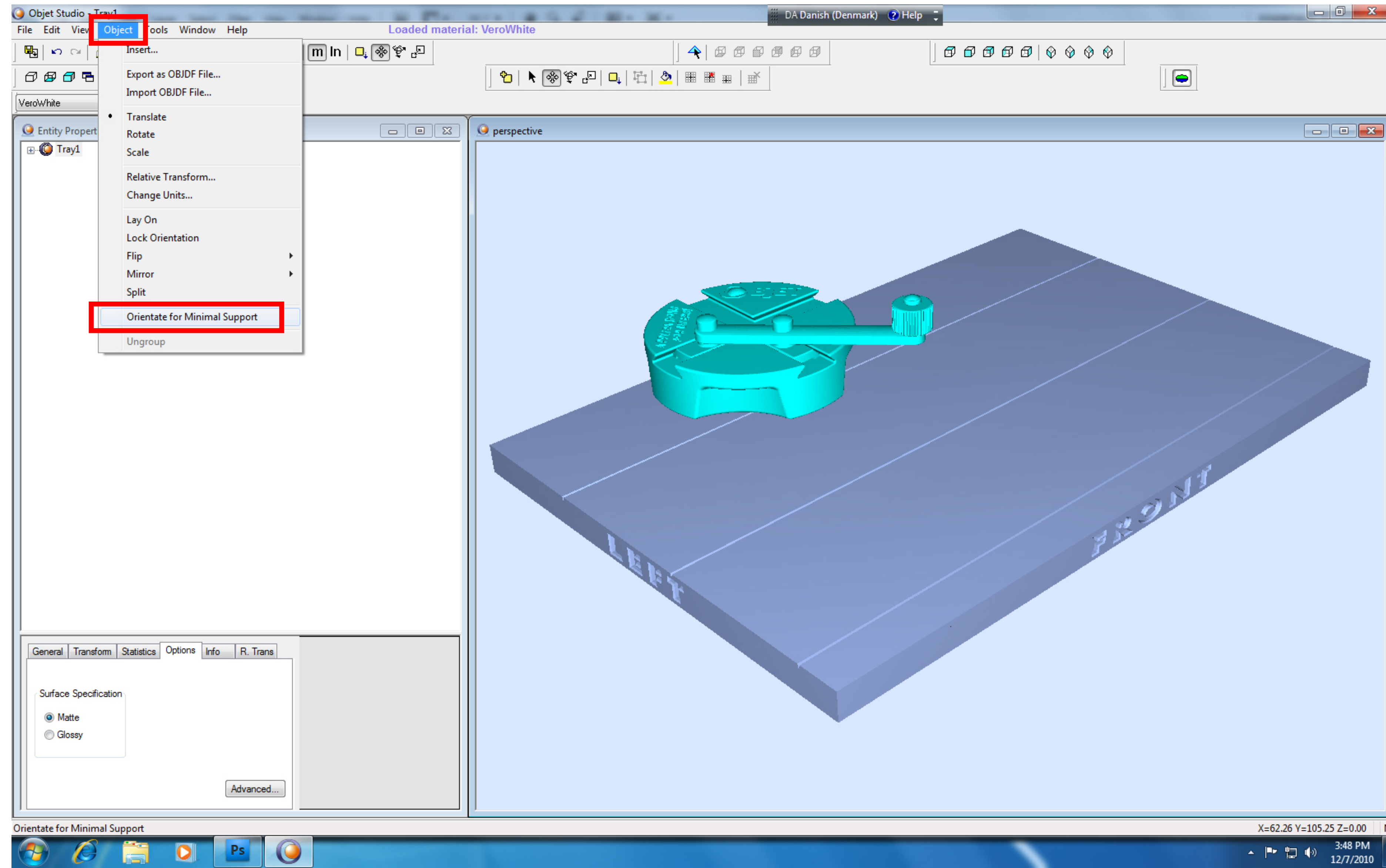
STEP #3

Before you do this step export your 3D-model as a STL file and make sure that it only contains closed surfaces. When you have your STL file in place, select it and press Open. If you have several STL files you can select them all before pressing Open.



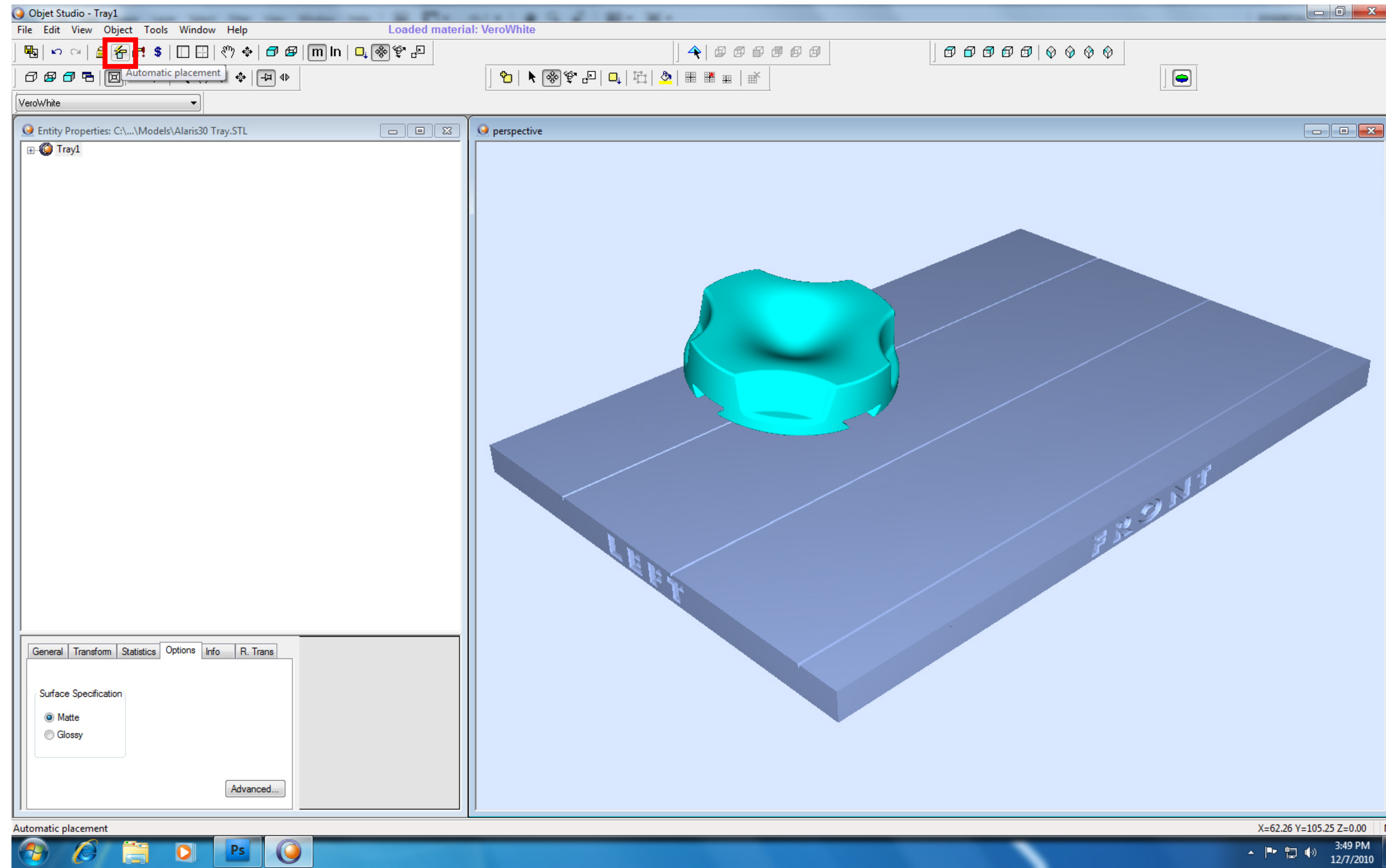
STEP #4

In the menu select Object and Orientate for Minimal Support. This will rotate your object so that the 3Dprinter uses a minimum of support material in the printing process (less material = lower price).



STEP #5

To make sure that the object is placed within the boundaries of the tray, press the Automatic placement icon. If you have several objects on your tray this step will ensure that there are no overlaps and that the objects are placed in such a way that the machine performs the print in the fastest possible way.



STEP #6

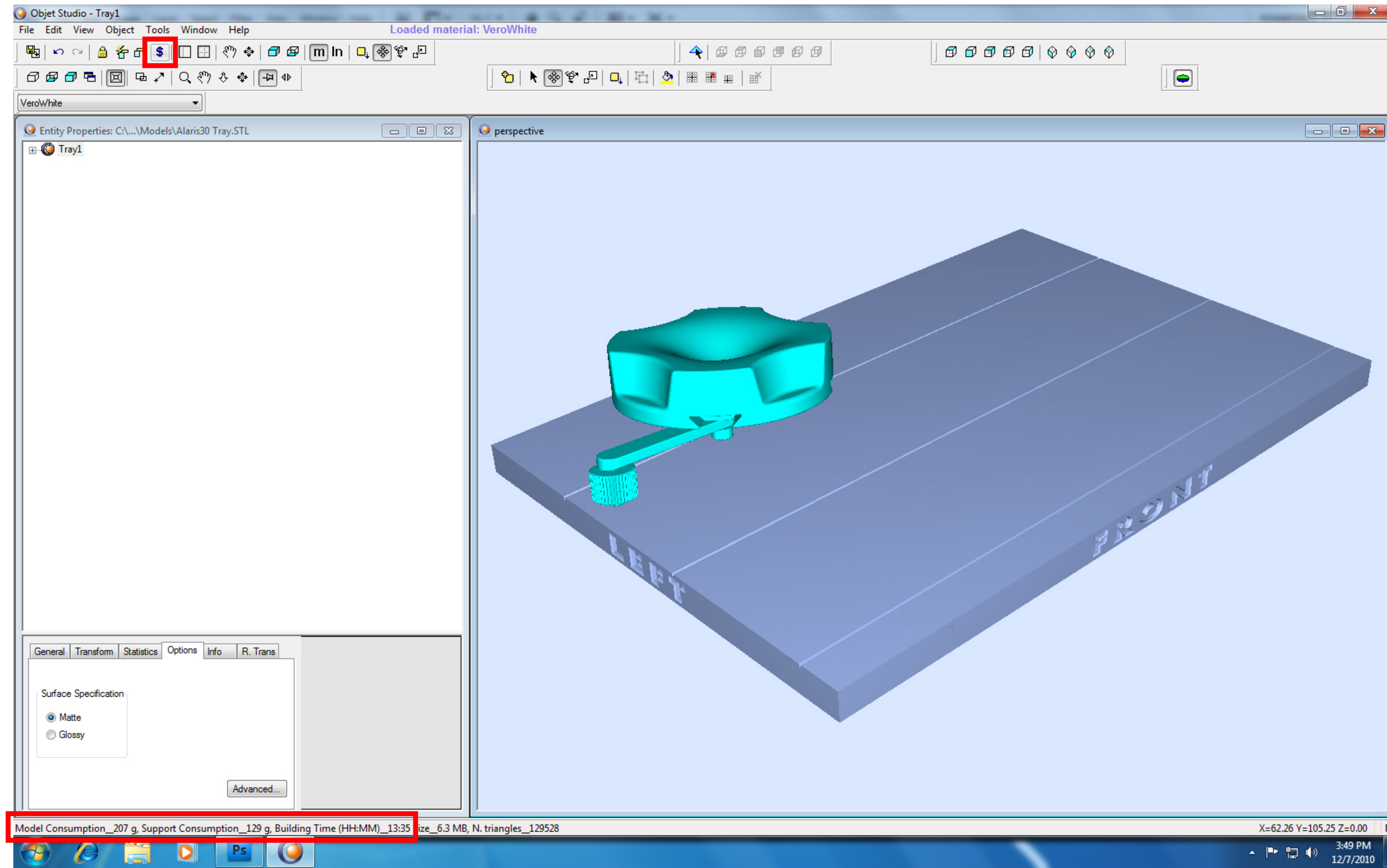
And now it's time for the last step. Press the Estimate icon and the software will calculate the material consumption for both the Model and the Support material as well as the Building Time for your tray. This info will be displayed in the bottom-left corner.

To calculate the price of your print, use the following little formula:

Model consumption * 2kr
+
Support consumption * 1kr
=
total price

The cost of the model used in this example would therefore be:

$(207 * 2) + (129 * 1) = 543$ kr.



STEP #7

When you're happy with the setting up of your tray and your models, go to the File menu and select Export Packed Job, name the file with your username and the date (ex. mgri07_24112010).

The created file can now be mailed to the workshop staff who will assist you in printing your model(s).

